

LONDON | ETON | WEYMOUTH

SPORT LOGISTICS GB

TRAVEL LOGISTIC SERVICES FOR THE UK SPORTING EVENTS OF 2012



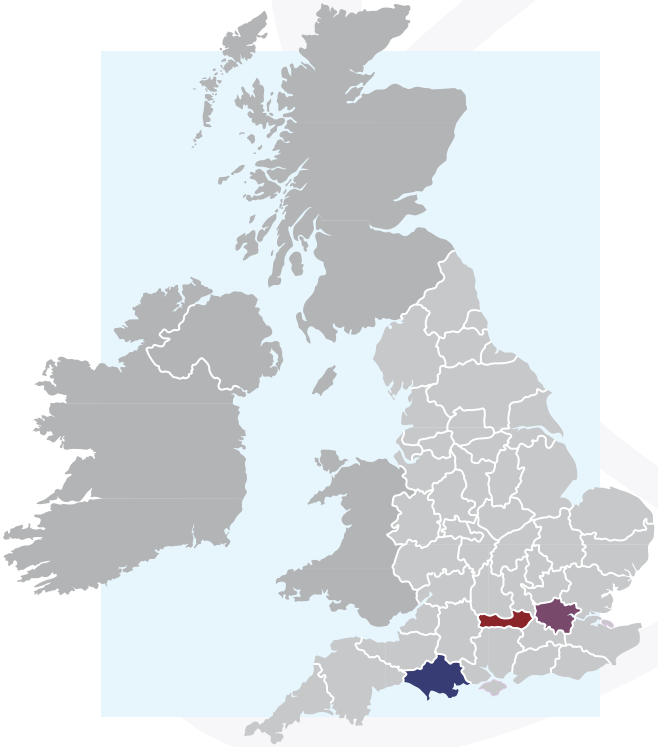
TRAVEL LOGISTICS | FLIGHTS | TRANSFERS | ACCOMMODATION | CAR AND COACH HIRE

INTRODUCTION

Travelling to experience the world's major sporting events requires excellent organisation. It also takes some forward planning and often it helps to have local knowledge and contacts. At Travel Places we offer you all of these things and more.

With over 30 years experience in organising travel logistic services for important international sporting events, we are one of the best placed to offer you a complete travel and destination management service from accommodation at guaranteed prices, to flights and transfers, through to car and coach hire. We are present for you 24/7, offering you assistance and support whenever you may need it. We will handle all the nitty gritty so you can get on with enjoying your stay, the sights and the events.

In this brochure you will find details of available accommodation for the period July - August 2012, when the Olympic Games will be taking place in London. Some of the properties are available for longer stays outside of this period, making them excellent choices if you need to get to know the area before the big events.



LONDON

London will host the majority of the Olympic events from Athletics, to Swimming and Judo. Live sites will be all over the city, with the majority situated in the East of London. The following hotels offer the ideal base to enjoy these.



CITADINES APART'HOTEL

A flexible space to accommodate your every need, each apartment feels like a haven from the bustle of the city. Located in 4 different convenient areas of London, this type of accommodation perfectly suits the independent traveller. The apartments and studios have fully equipped kitchens, complimentary internet access, 24/7 guest services and are cleaned daily. Linen and towels are laundered twice weekly. Guests can opt to take breakfast in the breakfast lounge.

Rates

Minimum stay 18 nights

Rates are room only and are inclusive of VAT at 20%

Trafalgar Square (newly refurbished in 2011)

Studio apartment:	£3,645
1 bedroom apartment:	£5,224
2 bedroom apartment:	£5,832

Barbican

Studio apartment:	£2,745
-------------------	--------

St Marks

Executive two bedroom:	£4,811
------------------------	--------

Holborn

1 bedroom apartment:	£5,354
----------------------	--------

LONDON

HOTEL IBIS LONDON CITY

Ibis London City hotel is a contemporary economy London hotel. Book the hotel for its ideal location in the heart of the City of London, close to Liverpool Street Station and the Tower of London. Each of the 348 modern guest rooms has satellite TV and tea and coffee making facilities. L'estaminet Restaurant offers bistro-style meals, with French and international favourites, and you can relax in the bar with a nightcap. The hotel offers wireless internet access for business guests.

HOTEL IBIS LONDON EUSTON ST PANCRAS

Ibis London Euston St Pancras is an economy London hotel close to Euston Station in central London. Your hotel booking puts you close to the British Library and the Eurostar terminal. Each of the 380 modern guest rooms has wireless internet and satellite TV. La Table Rouge restaurant serves French cuisine and the bar is open for coffee or cocktails. There are two meeting rooms, both with wireless internet access, and parking for 100 cars. The West End is a short tube ride from the hotel.

Rates

Minimum stay 18 nights

Rates inclusive of breakfast and VAT at 20%

Single occupancy £4,050

Double occupancy £4,140





LONDON

THINK APARTMENTS

A home away from home, Think Apartments combine the comforts and location advantages of great hotels and the feeling of freedom from being in your own place. Fully equipped, each apartment has a kitchen, digital TV and radio, complimentary internet access and a direct dial phone line. A regular housekeeping service is also offered to guests. The comprehensive local guides help you settle in and feel part of the neighbourhood, with suggestions on restaurants, bars and sights to take in.

Rates

Minimum stay 18 nights

Rates are for room only and are inclusive of VAT at 20%

Executive one bedroom apartment:	£3,456
1 bedroom apartment:	£4,141
2 bedroom apartment:	£6,800



TRAVEL PLACES

LONDON

K WEST HOTEL AND SPA

Luxury and choice are the defining features of this cool 4* Deluxe West London hotel. A stone's throw away from Westfield Shopping Centre and with excellent transport links nearby, K West Hotel and Spa offers excellent facilities including the K Spa, which this year underwent a £2 million refurbishment, and a dedicated IT and business area in the shape of the K Library. The rooms are spacious and peaceful, with luxurious and non-allergenic bedding. Make K West Hotel and Spa your base to enjoy the events and explore London's vibrant West End.

Rates

Minimum stay 18 nights

Rates are for room only and are inclusive of VAT at 20%

Standard room: £4,950





LONDON

MELIÁ WHITE HOUSE

A leading 4* deluxe hotel, Meliá is situated in the heart of London opposite Regent's Park and within easy walking distance of Warren Street, Great Portland Street and Regent's Park underground stations. Guest rooms offer the usual amenities and a range of services from 24hr room service to a pillow menu, all to make your stay unforgettable. The hotel's award-winning contemporary Spanish restaurant, L'Albufera, will cater for your fine dining requirements, while The Place is available for a more casual experience. A fully equipped business centre and gym are available for guests to use.

Rates

Minimum stay 14 nights

Rates are inclusive of breakfast and VAT at 20%

Standard Room:	£325 per night
Superior Room:	£367 per night
Executive Room:	£408 per night
Junior Room	£475 per night

Additional person £20 per night

LONDON

HAREFIELD MANOR HOTEL - ROMFORD

Located East of London, in Romford, this hotel provides the ideal base for supporters of the sporting events. Trains link Romford station and Stratford, one of the transport gateways for the Olympic Park, in 10 minutes. Guests can travel into Liverpool Street station, the heart of the City, in just 20 minutes. Harefield Manor Hotel houses 36 clean and comfortable en-suite rooms and provides guests with complementary broadband internet and satellite television. Guests can dine in the Papparazzi Ristorante Italiano which is renowned for its excellent cuisine.

Rates

There is no minimum stay

Rates are for room only and are inclusive of VAT at 20%

Executive Double/Twin rooms from:	£160 per night
3/4 bed rooms (Family Rooms) from:	£172 per night
Rooms with kitchenettes from:	£186 per night
Suites from:	£200 per night



Harefield Manor Hotel



TRAVEL PLACES



ETON

The Olympic rowing events will take place in Eton from the 28th July to 4th August 2012.

THE CHRISTOPHER HOTEL

The Christopher Hotel, Bar and Grill is a former Coaching Inn dating back to 1711, recently modernised to a high standard. Situated in the heart of Eton and surrounded by antique shops, art galleries, bars and restaurants, it is close to the world famous Eton College. Eton is separated from Royal Windsor by a pedestrian bridge over the River Thames and the hotel is therefore ideal for visiting Windsor Castle, Legoland and the many other attractions that Windsor has to offer. The Christopher Hotel is also perfect for business travelers. The Slough Trading Estate is only 3 miles away and the distance to Heathrow Airport is 9 miles.

Rates

Minimum stay 10 nights

Rates are for room only and are inclusive of VAT at 20%

Single room: £1,600

Twin room: £2,300

WEYMOUTH

The Olympic sailing events will take place in Portland near Weymouth from the 29th July to 11th August 2012.

THE VENUE

The Venue boasts 29 brand new en-suite rooms in generous 3* accommodation. The rooms are within a larger hotel complex which has extensive leisure facilities, a restaurant and bar as well as additional meeting and conference rooms. The Venue is located in Portland, across the causeway from Weymouth and with stunning views over Portland Bill and the channel beyond (see left for map). It is less than 10 minute drive to the sailing centre and, being situated on Portland, avoids the expected traffic congestion that will come from the Weymouth area during peak periods.

Rates

Rates based on a minimum stay of 18 nights over the Olympic period

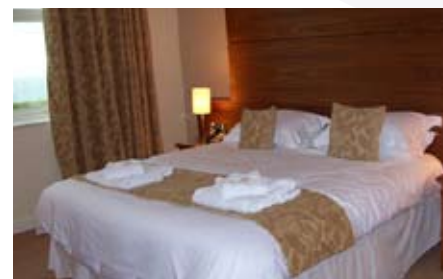
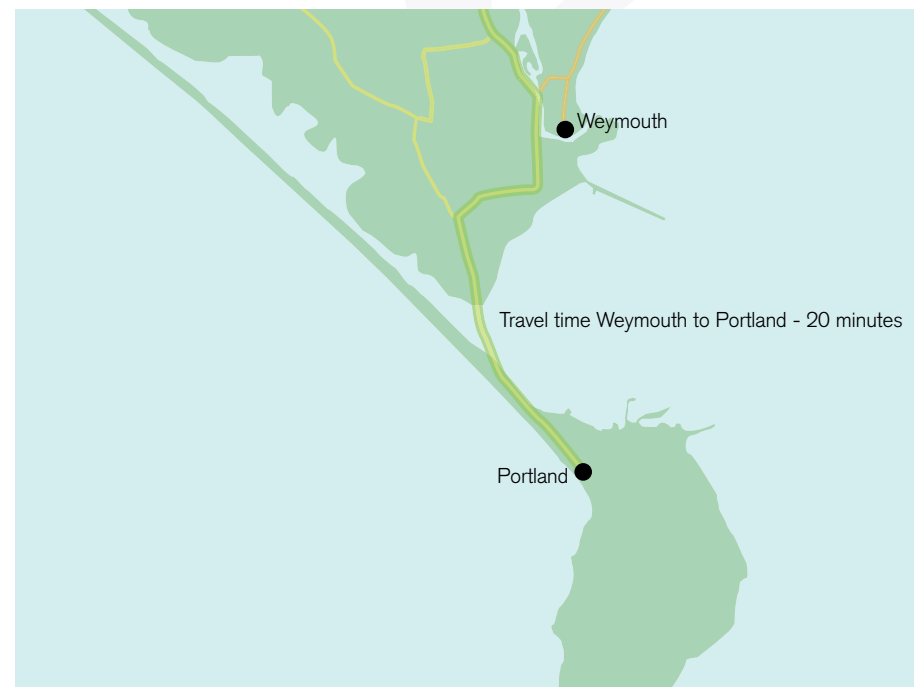
Room only

Single or double occupancy: £140 per night

Rates based on a minimum 8 night stay over the Paralympic period

Room only

Single or double occupancy: £85 per night



Representative images of the accommodation



TRAVEL PLACES



TRAVEL PLACES

- One stop shop for all your needs whilst you are in London
- Meet and Greet at London's airports and St Pancras for Eurostar
- Full transport provider from coaches to luxury vans, and cars
- Venue finding from the unusual to the simply spectacular
- A genuine 24 hour service
- Theatre tickets, restaurants, tours and activities
- Staff with a genuine can-do attitude



Accommodation booking requests can be made through accommodation2012@travelpaces.co.uk

Flight booking requests can be made through flights2012@travelpaces.co.uk

WE KNOW SPORT, WE KNOW TRAVEL, WE KNOW LONDON



TRAVEL PLACES



TRAVEL PLACES

Podium House, 61 Chapel Road
Worthing, West Sussex BN11 1HR
T: +44 (0)1903 832888

Suite 12, Swan Court, 9 Tanner Street
London, SE1 3LE
T: +44 (0)203 117 0870

events@travelplaces.co.uk



Travel Places are fully bonded and hold all appropriate licences.

Travel Places are a division of American Express Limited

VISIT
LONDON
PLATINUM PARTNER
VISITLONDON.COM